

A long-exposure photograph of a forest stream. The water flows over numerous large, moss-covered rocks, creating a soft, blurred effect. In the background, a small waterfall cascades over more mossy rocks. The surrounding forest is dense with green foliage, and sunlight filters through the trees, creating a warm, golden glow. The overall scene is serene and natural.

ANNUAL REPORT 2021



NGĀTI TAMA

KI TE WAIPOUNAMU TRUST



Front cover - Riuwaka Resurgence (Kane Hartill)



TE PIKO O TE MĀHURI, TĒRĀ TE TUPU O TE RĀKAU –

*THE WAY A YOUNG SAPLING IS NURTURED,
DETERMINES HOW THE TREE WILL GROW.*





RĀRANGI KŌRERO

Chairman's Report	6
Operations Report	10
Charitable Report	12
Ngāti Tama ki Motueka	14
Priorities 2020 - 2025 Update	18
Education Grants	22
Commercial Investments Report	24
Financial Overview	28
Financial Breakdowns	30
Investing in our Future	32

This report includes the annual reports of the NTWT and NTCT and contains information about our commercial entity TAHC. As part of our groups reporting responsibility, TAHC's financial results have been summarised in this report, however the full annual report for TAHC can be provided in a separate publication. Consult the Trust offices for a copy.

*This report can be downloaded from:
www.ngati-tama.iwi.nz and whanau.ngati-tama.iwi.nz*

Waiho mā āu mahi koe e kōrero

Let your deeds speak to you



ANTHONY LITTLE (BUTCH)
CHAIR



**NGĀTI
TAMA**

KI TE WAIPOUNAMU TRUST

CHAIRMAN'S REPORT

NGĀTI TAMA KI TE WAIPOUNAMU TRUST

*Uea te pou o te whare kia tū tangatanga,
he kapua ka whakairia, He pōkēkē ao ka tau!
He kura tangihia, he maimaia aroha ki rātou
kua huri ki tua...*

*he kura te winiwini, he kura te wanawana ki
tua o rehia, ki tua o reao,
ki taku whakamaunga, kekete noa mai hō
tatou mate, mō aitua*

*Tangi ngunguru tonu nei te hau ngāhehe o
oruwaiwhio,*

*te hauangi o whatumanawa ao mai, pō
mai... haere rā koutou, e au ai te moe...kāti
Pūpūwha manawa o Tama*

*Whakaeaea manawa o Tama ki te rangi,
Ranginui, Rangiroa, Rangitahua,
Tahua nuku, tahua rangi*

*E Tū e hōmai nei tō waiora ora, he ora
He ora ko tou manawa, ko taku manawa
Tēnei hoki to manawa ka tīnā
Tēnei hoki to manawa ka toka
Ka poutāikitia, ā ka noho tou manawa,
He manawa ora e hai*

Tēnā koutou e te whānau o Ngāti Tama ki Te Taihū. We are pleased to present our Annual Report for the year 1 October 2020 to 30 September 2021. It is, however, important firstly to acknowledge the loss of whānau over the past year. Our thoughts are with all those who were unable to grieve for their loved ones in person. We mourn with you and your loss is felt throughout the iwi. Ka nui te aroha o te ngākau ki a koutou.

Ngāti Tama lost two great totara over the past year, Mauī John Mitchell, who was instrumental in the establishment of Ngāti Tama Manawhenua ki Te Tau Ihu Trust, which transitioned into the Trust we have today for Settlement. John was the

inaugural Chairperson for Ngāti Tama, his leadership and support continued right up until he passed. John and his wife Hilary's work as researchers over 20+ years helped form the foundations for Te Taihū Treaty Settlement's, in particular Ngāti Tama's hearing and subsequent settlement.

We also mourn the recent loss of John Tahana Ward-Holmes, who has been an enduring figure for Ngāti Tama, particularly in Mohua. His legacy of kaitiakitanga, manaakitanga and whanaungatanga is embodied in his work over the years with tohora, Onetahua paepae and Te Waikoropū Springs.

We will continue to uphold their legacies through telling of their stories and ensuring we provide the best benefits for the future of ngā uri o Ngāti Tama.

As you will know, due to the risks of Covid-19, trustees made the decision to postpone this year's hui-ā-tau from April to June 2022, to align with the first New Zealand public holiday for Matariki. As we continue to endure the long tail of Covid-19 and the challenges this brings, we have continued to achieve key milestones. This year, Covid-19 remained top-of-mind as Aotearoa continued to move up and down alert levels. We'd like to acknowledge the awhi shown by our kaimahi, Board, whānau and iwi of Te Taihū and many others across our rohe who supported our whānau and those most vulnerable.

Even while we work through a global pandemic, we are pleased to advise that commercially the value of our collective assets has grown to \$69 million. This is up (14%) from \$60.9 million for the 2020 financial year. An overview of our financial position is provided further in this annual report.

TAMA ASSET HOLDING COMPANY

The board would like to acknowledge the directors of the Ngāti Tama Asset Holding Company and our investment managers Koau for their proactive and diligent mahi this year. We have managed to grow our asset base considerably during a difficult financial year, largely through collaborating with other iwi in direct investments in order to build a balanced portfolio of high quality assets.

Some of the key highlights include;

- Continued investments across the Hāpai group (Hāpai Commercial, Hāpai Housing and Hāpai Development) into commercial, build to rent and development properties across the country
- Investment in whenua based collectives with other iwi. Including an investment in Pūainuku Pastures Ltd, a limited partnership developed to grow interests in agricultural opportunities with well-established partners.
- Maintaining direct involvement in aquaculture through the acquisition of over twenty lines in Golden Bay Marine Farmers Consortium Ltd. We remain a 1/8 owner in Maara Moana Ltd, which has consented water space for 337 lines in Golden Bay with seven of the eight blocks now leased and operating as per expectations.
- The resilience of our forestry lands with low-risk commercial leasing arrangements. Ngāti Tama now owns 13,399ha of forestry land as the cornerstone of our land portfolio.

NGĀTI TAMA CHARITABLE TRUST (NTCT)

I would like to recognise our chair and trustees on the Charitable Trust and the also the Grants committee who have delivered numerous cultural and charitable activities and benefits for ngā uri o Ngāti Tama over the past financial year. The Trust provides support through distribution of education, cultural and covid-19 relief grants, and leads our cultural initiatives in rituals, events and wider Te Taihū engagement.



Mau John Mitchell



John Tahana Ward-Holmes

NGĀTI TAMA KI TE WAIPOUNAMU TRUSTEES



Phil Sparks Dep Chair



Leanne Manson



Margie Little



Fred Te Miha



Anaru Stephens



Nikita-Marie Day

TAMA COVID RESPONSE AND RECOVERY

Our response and recovery efforts have continued to provide support to whānau with practical and meaningful services, easily accessed via the whānau App. The Trust offered a diverse range of grants for members including an energy subsidy for winter months. We had a great response from whānau with our vaccination campaign and continue to encourage whānau to get double vaccinated and boosted.

We continue to put measures in place in an effort to reduce and mitigate risks of transmitting Covid-19. NTWT hui continue to be online bi-monthly, and NTCT, TAHC and kōmiti meetings are held online when kanohi ki te kanohi poses a risk.

TE REO ME ŌNA TIKANGA

Since 2019 Ngāti Tama have been working towards the development of a language strategy. This financial year, the team secured funding from Te Mātāwai to bring on a leading language planning expert and established an advisory group made up of Tama members. We are currently planning to launch our Ngāti Tama language Plan, **Tama Kōrero**, during the AGM weekend which will provide the foundation to launch future language planning activities for our iwi.

In early 2020 our talented whānau Grant Joyce and videographer Adam Walker also interviewed 13 of our pāhake and leaders to capture and preserve Ngāti Tama kōrero tuku iho. These interviewed will be put together as a taonga for future activities.

HE KUPU WHAKAKAPI

In conclusion, we would like to acknowledge those of our whānau who are stepping down from their representative roles. Leanne Manson is

stepping down as a Trustee from the Ngāti Tama ki Te Waipounamu Board, after 3 terms. Leanne is a past Chair of the Board and a dedicated Trustee who has committed endless amounts of time and energy to the role, in particular her commitment and passion to the Te Waikoropupū Water Conversation Order. Leanne will be missed at the Board table, however I am sure she will return in the future. Sheree Klenner also steps down from the Whakapapa Kōmiti, and Auntie Judi Billens steps down from her position on the Nelson Marlborough Iwi Health Board (NMDHB) where she has held this position for many years, thank you very much for your devotion to your roles.

I would also like to acknowledge our whānau who have taken on roles to serve Ngāti Tama; Raewyn Klenner and Kate Reddock were appointed to the roles of Associate Trustees on NTWT Board, and Fred Te Miha was appointed to the Nelson Marlborough Conservation Board.

The Board would also like to acknowledge the dedication of our Ngāti Tama staff; without your expertise and commitment our waka would not be moving forward. A particular mention must go to Jaqui Ngawaka, our General Manager for the last three and a half year's who led our team with enthusiasm and mana.

To our pāhake, thank you for your guidance and support; it is through our collective commitment and determination that our Ngāti Tama whānau will continue to grow and thrive.

Tama tū ki te Tauihu, Tama ora ki te ao

Anthony (Butch) Little
Chair

Ngāti Tama ki Te Waipounamu Trust



Kei runga: Ngāti Tama whānau at Motueka High School to commence development of Ngāti Tama's language strategy, Judi Billens. **Kei raro:** Leanne Manson, Makere Chapman – filming for Ngāti Tama Oral Histories 2021



OPERATIONS REPORT

NGĀTI TAMA KI TE WAIPOUNAMU TRUST OPERATIONS TEAM

*Tuia te rangi e tū nei, Tuia te
papa e takoto nei, tuia rātou
kua wehe ki te pō uriuri,
ki te pō e oti atu ai... Tuia ngā
tūmanako a te iwi kia whiria ki
te whatumanawa o te tangata,
kia kū, kia mou! Mou kītā*



PHIL SPARKS
DEPUTY CHAIR



**NGĀTI
TAMA**

KI TE WAIPOUNAMU TRUST

In December of 2021, Ngāti Tama bid farewell to General Manager Jaqui Ngawaka, who served over three and a half years at the helm, guiding the Group towards growth and cohesion. As Deputy chair of Ngāti Tama ki Te Waipounamu Trust, I am honoured to present this operations report on behalf of our staff for the period 1 October 2020 to 30 September 2021.

As I reflect on the last financial year and the progress made by the operations team, there are key pieces of work they were able to achieve under the guidance of Jaqui. Even with the continued threat of Covid-19, repeated lockdown's in Tāmaki Makaurau and a nationwide lock down, the team adapted, grew and together, persevered. The team adopted new Covid-19 health practices and working arrangements, to protect health and wellbeing of whānau and visitors.

In late 2020 the team focused on establishing the workstreams needed to fulfill our 2025 priorities. This mahi has guided majority of the projects and initiatives both within Tama and Te Taihū collectively. Jaqui refocused the team's business-as-usual mahi, ensuring alignment across the Ngāti Tama Group priorities.

Key highlights across priorities:

- **Ahurea:** The development of Te Rautaki Reo a Ngāti Tama 2050 to stimulate te reo me ōna tikanga.
- **Ahuora:** Tama administered kai packs, \$200 grants, back to school packs and \$100 Winter energy subsidies to help cover rising energy costs and vaccination campaign to support whānau well-being and independence.
- **Ahuwhenua:** We continue to enhance our significant lands and waterways with the Water Conservation Order of Te Waikoropupū and support the ongoing mahi at Wakapuaka.
- **Ahuwhaiti:** Our operations team is continuing with a review of our technologies and system, including our member registration database system to ensure they are fit-for-purpose.
- **Ahumahi:** To develop opportunities to work and live in Te Taihū, Jaqui worked closely with Hāpai whānau to explore opportunities for an investment in Ngāti Tama's rohe and purchased the NTWT Office building in September 2021.

During Jaqui's term, she was one of two co-chairs of Te Kotahi o Te Taihū Charitable Trust (TKTCT) until her departure in December 2021. TKTCT signed the Deed of Trust between the eight Te Taihū iwi, appointed trustees (one from each iwi) and appointed a six-person operations team, including Operations Manager, Dr Lorraine Eade. Ngāti Tama led on several fronts, including hosting the mihi whakatau for the TKTCT team at the Tama office. During the year, our team led discussions with Te Taihū iwi on a programme called Ka Uruora, which seeks to provide opportunities for whānau through an iwi savings programme, build knowledge and education through financial planning and provide opportunities for whānau through integrated housing solutions. We look forward to progressing this in the year ahead.

Jaqui sat as a kōmiti member on Te Kāhui Mātauranga o Te Taihū, which has been working to identify and advance opportunities for collaboration in education between iwi; provide advice and guidance for school boards via Kāhui Ako; and assist in the development of tangata whenua narratives. Through various funding initiatives, Ngāti Tama developed an educational resource focused on Te Waikoropū, which will be distributed to Te Taihū kura in 2023.

Jaqui led the refresh of the branding across the whole Ngāti Tama Group, with a contemporary and fresh take on our well loved tohu and logo. Refreshing our logo is a timely reminder of the history of the tohu, first created in 1996 and then 'refreshed' in 2011.

I would like to thank Jaqui and the team for all their continued hard work. Through Jaqui's leadership, the capacity in the team increased, external funding secured, outcomes for whānau improved and on the whole, we can be proud of how far Ngāti Tama have come. Thank you Jaqui for all that you have achieved with Ngāti Tama, I wish you and your whānau all the best for the future.

Nā, Phil Sparks

Ngāti Tama ki Te Waipounamu Trust



Kei runga: Ngāti Tama farewelled GM Jaqui Ngāwaka in December 2021. **Kei raro:** A collection of events led by GM Jaqui Ngawaka. Ngāti Tama operations team, presenting the taonga to Brightwater school, unveiling and blessing of Tama House, Unveiling of Te Ara o Tamaariki, Whakatau for the TKTCT Operations team.



*Ka rere manu ki uta,
ka rere manu ki tai,
ka tieke tī, ka kī waiora e i
Piki ki Runga, Te Parapara,
Horoirangi haku taumata
whakaingoino, haku tihi
taupaeroa.. e tū ee*



KERENSA JOHNSTON
CHAIR

TRUSTEES:
BUTCH LITTLE
PHIL SPARKS



**NGĀTI
TAMA**

KI TE TAUHU CHARITABLE TRUST

CHARITABLE REPORT

NGĀTI TAMA KI TE TAUHU CHARITABLE TRUST

I am pleased to present the second Annual Report for Ngāti Tama ki Te Taihu Charitable Trust (NTCT) to ngā uri o Ngāti Tama ki Te Taihu for the period October 2020 to 30 September 2021.

NTCT was established to benefit present and future members of Ngāti Tama ki Te Taihu, including the relief of poverty, advancement of education or any other matter beneficial to ngā uri o Ngāti Tama ki Te Taihu irrespective of where members reside.

As Trustees, we are guided by the Trust's overarching vision, **Tama tū ki Te Taihu, Tama ora ki te ao** and work to fulfil our 2025 priorities. NTCT engages NTWT under a Service Level Agreement, the terms of which are agreed annually with NTWT, along with the actual programmes, initiatives, and services to be performed to achieve its objects under the Trust Deed.

I would like to acknowledge the work of the Tama staff and the Pou Hāpai Tikanga for leading our cultural activities through leadership in rituals including pōwhiri, blessings, dawn ceremonies and participation in iwi activity (including iwi working groups). Tama has been involved in cultural and whānau events including Manu Kōrero and Kapahaka competitions, and attended various stakeholder hui such as the Regional intersectoral Forum, Nelson Marlborough Institute

of Technology, other crown agencies, including Te Puni Kokiri, Internal Affairs, Ministry of Education and Council controlled organisations.

For the last financial period the NTCT has been able to consistently deliver positive and meaningful benefits and services to members, reflected in the increased level of activity by the Trust and, in turn, an eagerness from whānau to connect back to their ukaipō.

NTCT administered 120 education grants valued at \$45,000. Although this was around \$5,000 less than the previous period, the number of recipients of education grants increased by 11%.

Overall, grant distribution increased by 19% in this financial period, with a total of over \$127,000. NTCT distributed \$30,000 to Te Awhina Marae, \$15,000 to Manawhenua ki Mohua, over \$15,000 in sporting and cultural grants to whānau and more than \$9,000 in Manaaki grants.

It is encouraging to note that whānau engagement with Tama kaupapa has also increased with more whānau attending our hui-ā-tau, online wānanga, monthly karakia, and accessing Tama services and kaupapa through our website, app and social media.

Funding from the Ministry of Education progressed our work and initiatives in

te reo, tikanga and education. 'Back to School' packs were made available to tamariki and rangatahi, and educational resources are being developed to support the promotion and retention of Ngāti Tama kōrero and hitori within our whānau and wider communities.

Funding was secured from Te Mātāwai to continue our mahi in the reo and tikanga space. This supported whānau to develop Te Rautaki Reo a Ngāti Tama. Guided by an expert language planner, whānau have worked together to develop a language strategy that will guide us to fulfil our reo, tikanga, marae and whānau aspirations.

Funding was secured from Te Kotahitanga o Te Taihū Charitable Trust to progress our Tama Covid Response and Recovery Plan and promote messages around keeping our whānau informed, safe and encouraging whānau to get vaccinated.

NTCT has a role in kaitiakitanga and protection of significant sites. A response is pending from the Environmental Protection Agency with regard to the Water Conservation Order application for Waikoropupū Springs. Ngāti Tama staff provide support by liaising with Territorial Local Authorities on Resource Management matters and attending relevant meetings to ensure that the voice and interest of Ngāti Tama members is registered.

This past year has seen NTCT activity increase positively, and I would like to thank the Charitable Trust's Trustees, Butch and Phil, staff of NTWT for their mahi and I look forward to sharing with whānau our future progress.

Kerensa Johnston

Ngāti Tama ki Te Taihū Charitable Trust



Kei runga: Vaccination competition, Kura Stafford and Margie Little presenting at Te Papa Pounamu Conference, Te Waikoropū Springs Resource.



Kei runga: Unveiling of Ngā Tīmoti pouwhenua at Ngā Tīmoti School
Kei raro: Putatara commissioned by NTCT to present to the winners of best whakangahau group at Te Mana Kuratahi 2021.





Ngāti Tama ki Motueka

Ngāti Tama have always maintained a long and lasting connection to Motueka. It is a space of contention for some iwi who hold ahikā. However, prior to punitive legislation and regulatory land alienation schemes, there is clear evidence of Ngāti Tama residence and land ownership in Motueka.



Motueka Awa

By Mauī John Mitchell (1941 - 2021)

In May of 2021 Ngāti Tama had the privilege of sitting down with Rangatira Mauī John Mitchell for our Oral Histories interview. He shared some kōrero about Ngāti Tama's connection to Motueka. We are grateful to be able to share, from John in his own words, Ngāti Tama's deep and enduring connection to Motueka.

In 2012 Tama had a hui on the issue of Ngāti Tama in Motueka, and has bounced backwards and forwards since time was, there are people who say that we [Ngāti Tama] have no status in Motueka. The Chair [of Tama] at the time was 'tetchy' about the fact that Ngāti Tama was being side-lined by other iwi.

We finally forced a hui at Te Awhina Marae and things got quite nasty, which is that there will be no paperwork submitted, that we do it on oral presentations, and you stand up and just shout at each other and say, "there's no Ngāti Tama in Motueka". We had prepared these materials before the days of PowerPoint. Things reached an impasse, we weren't going anywhere. Until, one of the pāhake stood up and did a real haka, he demanded that we be permitted to present this material. A listing of a number of key documents in which Ngāti Tama is formally recorded as resident and landowner in Motueka.



"OUR CLAIM TO MOTUEKA. WHAT I KNOW ABOUT IT IS SUMMARISED IN THIS BOOK (PICTURED LEFT). WHAT WE DID WAS PULL TOGETHER ALL OF THE HISTORIC EVIDENCE, WHICH SHOWS US BEING [NGĀTI TAMA] REFERRED TO AS AN IWI LIVING IN MOTUEKA"

1



**WAITANGI TRIBUNAL 2008 COMMENTARIES REGARDING
STANDING OF NGĀTI TAMA KI MOTUEKA, AND EVIDENCE
PRESENTED BY NGĀTI TAMA AT A HUI HELD AT TE AWHINA MARAE.**

2



Ngā Piko and E Harri

3

Ngatikon	Chandy Bay	70	Witikon, To Kanan
To Alawa	Queen Charlotte's Sound	450	Rapika, To Howe
Pakiripati, &c.			
Ngatikon	Picton River	60	Hakild, Arama
Ngatikua			
Ngatikua	D'Urville's Island	150	Maka, Tarpiko
"	Cutcliffe's Harbour	70	Toa, To Kowai
Ngatikua	Wakapuia	120	To Mam
Ngatikua			
Ngatikua	Mitaka	250	Aperahama, To Watawaki
" &c.			
"	Mamora Bay	180	Hemare, To Kela
	Total south side of Cook's Strait to Mamora Bay...	1100	
Ngatikon	Port Cooper, Port Latt, Akaroa, Otago, &c. &c.	2500	Talaroa, Karaiti, Tapi
Ngatimanga	Stewart Island	150	E Maru
"	Chatham	450	Pomare, E Totara, Memmore.

From the last authentic register has been obtained some data of opportunity of collecting, by field notes that the Aborigines have Population, bear a proportion of three-fifths to the Female, and that the number of Native, require of heating area may easily be calculated as being one half of the square.

4

[illegible]

- 1 The first is dated 1842 when the chief surveyor, Samuel Stephens, drew a map of the Motueka district. Those areas identified as being set aside for the Ngāti Tama whānau are highlighted in pink.
- 2 In 1842 to 1845, artist Isaac Coates painted the portrait of Ngāpiko and his wife E Harri... the titles clearly set out their iwi affiliations to Ngāti Awa, Ngāti Tama, Ngāti Rārua and Kāwhia... so here in 1842, is an artist writing on his painting of this man, that among his iwi connections is Ngāti Tama. For his wife, Harri or Herehere - Ngāti Tama.
- 3 In 1845, an official by name of Samuel Grimstone published a table summarising South Island Māori populations. And it includes Ngāti Tama in Motueka.
- 4 In 1847, John Tinlin did a census of the Motueka districts. Eighteen Ngāti Tama whānau were identified as living in Motueka.
- 5 In 1847 and 1848 there was quite a big stack of Anglican baptisms recorded by the Anglican Church in Nelson. And there are quite a number of Ngāti Tama people that were baptised those years.
- 6 In 1847, the Nelson Examiner newspaper and also in Government Gazette, a government official publication, appointing native assessors. Now these were chiefs who were appointed to a position, which was akin to a JP, and they would sit on the bench in a court and hear cases involving Māori. And in the list is, and this is a direct quote, "Ngā Piko of Motueka a chief of the Ngāti Tama tribe."
- 7 In 1855 there's published a list of the statistics of Nelson, and Ngāti Tama in Motueka is mentioned there.
- 8 In 1862 James McKay Jr. published a census of the people of Motueka and that includes Ngāti Tama.
- 9 In 1862, James McKay again, talks about the transfer of sections 144 to 147 that's 200 acres at Puketutu (map 1 - highlighted gold). The Western end of the inlet at Motueka. Four sections, 200 acres were created as occupation reserves in favour of Ngāti Tama families as compensation for lands that were taken from them at Whakarewa.

- 2 In 1842 to 1845, artist Isaac Coates painted the portrait of Ngāpiko and his wife E Harri... the titles clearly set out their iwi affiliations to Ngāti Awa, Ngāti Tama, Ngāti Rārua and Kāwhia... so here in 1842, is an artist writing on his painting of this man, that among his iwi connections is Ngāti Tama. For his wife, Harri or Herehere – Ngāti Tama.

- 3** In 1845, an official by name of Samuel Grimstone published a table summarising South Island Māori populations. And it includes Ngāti Tama in Motueka.

- 4** In 1847, John Tinline did a census of the Motueka districts. Eighteen Ngāti Tama whānau were identified as living in Motueka.

- 5** In 1847 and 1848 there was quite a big stack of Anglican baptisms recorded by the Anglican Church in Nelson. And there are quite a number of Ngāti Tama people that were baptised those years.

- 6 In 1847, the Nelson Examiner newspaper and also in Government Gazette, a government official publication, appointing native assessors. Now these were chiefs who were appointed to a position, which was akin to a JP, and they would sit on the bench in a court and hear cases involving Māori. And in the list is, and this is a direct quote, "Ngā Piko o Motueka a chief of the Ngāti Tama tribe."

- 7** In 1855 there's published a list of the statistics of Nelson, and Ngāti Tama in Motueka is mentioned there.

- 8** In 1862 James McKay Jr. published a census of the people of Motueka and that includes Ngāti Tama.

- 9 In 1862, James McKay again, talks about the transfer of sections 144 to 147 that's 200 acres at Puketutu (map 1 - highlighted gold). The Western end of the inlet at Motueka. Four sections, 200 acres were created as occupation reserves in favour of Ngāti Tama families as compensation for lands that were taken from them at Whakarewa.

PRIORITIES 2020-2025 UPDATE

AHUMAHI | DEVELOP
OPPORTUNITIES TO LIVE
AND WORK IN TE TAUHU



AHUWHENUA |
ENHANCE OUR SIGNIFICANT
LANDS AND WATERWAYS



AHUREA | STIMULATE
LEARNERS OF TE REO,
TIKANGA AND WHAKAPAPA

658
IWI MEMBERS



AHUWHĀITI |
FIT FOR PURPOSE SYSTEMS
AND OPERATIONS



AHUORA | EXPLORE OPTIONS
TO EXPLORE WHĀNAU WELLBEING
AND INDEPENDENCE

WE SERVE 658 IWI MEMBERS WHO CONNECT TO 3 MARAE ACROSS TE TAUHU.
THE TRUST IS RESPONSIBLE FOR ENSURING WE ACHIEVE OUR
2025 PRIORITIES IN ORDER TO ACHIEVE OUR 2050 VISION...

TAMA TŪ KI TE TAUHU, TAMA ORA KI TE AO



Kei runga: Kaea Rameka Yr7 Saint Peter Chanel and Paige Rameka Yr9 Sacred Heart Girls College, Tree planting at the unveiling and blessing of the E Manu Interpretation panel, Whakatū. **Kei raro:** Laurelee Duff and John Ward-Holmes at the Water Conservation Order Mediation hui, Ko'iawekaloha and Manawani Gilbert.



Te Reo Language Plan to 2050	Complete
Te reo online programme	In progress
Tikanga and whakapapa wānanga	Ongoing
Cultural training for Staff, Trustees and Directors	Ongoing
Indigenisation of Te Taihu spaces	Ongoing

To stimulate learning of Te Reo, tikanga and whakapapa for our iwi is a top priority. NTWT operations have progressed our fit-for-purpose 2050 Te Reo Language Plan, developed by whānau to build capacity for paepae wāhine, paepae tāne, rangatahi, whānau and capturing our Tama kōrero. Parallel to the development of Te Rautaki Reo a Ngāti Tama, our Te Pou Hāpai Tikanga has been working closely with whānau to build capacity and reo competency.

In late 2020, the Trust sponsored Te Taihu o Te Waka ā Maui Māori Council in hosting Te Huinga Whetū and Te Taihu Festival. NTWT commissioned a Putatara, named Poutama for 'best whakangahau group' which was won and presented to the inaugural winners, Brightwater School.

We continue to indigenise our spaces in Te Taihu with the erection of the E Manu interpretation panel at E Manu Reserve. NTWT blessed and unveiled Ngā Tīmoti Pouwhenua at Ngatimoti School in December 2020 and the unveiled Te Ara o Tamaariki street name.



Ground-truth our significant areas and wāhi tapu

In progress

Our Taiao is a key Tama priority, and it is paramount that Tama has representation and a voice across Taiao kaupapa, councils and RMA. Tama whānau continue to advocate for the protection of our cultural sites across the rohe such as Te Waikoropupū and Wakapuaka. Our operations team and reps regularly engage in RMA kaupapa and give representation to the Kotahitanga mō te Taiao Alliance.

Ngāti Tama has been working within the Alliance to lead and support collaborative landscape-scale conservation projects; a partnership for environmental leadership across Te Taihu. The Alliance is made up of all eight Te Taihu iwi including Ngāti Tama, the five City and District councils from the Northern Te Waipounamu and the Department of Conservation. In 2020 the Alliance signed a Memorandum of Understanding with The Nature Conservancy (TNC) New Zealand Trust to formalise a mutual collaboration, with the purpose of TNC facilitating and supporting the implementation of the Kotahitanga mō te Taiao Strategy as an integrated TNC NZ programme. The Alliance also secured \$20M of Jobs for Nature projects for catchment restoration projects across the motu and working with Stuff media. TNC and the Alliance are exploring new tools to manage wasps at scale with the project Wasp Wipe Out.

In 2021 our whānau presented at the Papa Pounamu Conference for NZ Planners Institute about the Water Conservation Order progress for Te Waikoropupū.



AHUORA / 2025 GOALS

Identify key wellness programmes across New Zealand	<i>In progress</i>
Social impact assessment of our investments	<i>Start 2023</i>
Subsidised healthcare and insurance schemes	<i>In progress</i>
Develop NTWT whānau financial health framework	<i>Start 2023</i>
Travel subsidy scheme for whānau 2022	<i>Complete</i>

Through our experiences of Covid-19 it was clear that the Group needed to address challenges around support, wellbeing and interdependence. Ahuora focuses on making available grants to help whānau cover costs of living. In the last financial year Tama administered 50 \$200 kai packs and distributed a total of 148 \$200 grants to whānau. The Trust also distributed 88 \$100 Winter Energy subsidies to help cover rising energy costs and had 162 whānau participate in our vaccine competition. At the start of the 2021 school year whānau had the opportunity to order back-to-school packs, which included stationary, Tama sun hats, drink bottles, activity packs and books to learn about te reo and Ngāti Tama kaupapa. Over 130 packs were distributed to whānau.

Te Kotahi o Te Taihū Charitable Trust was set up in February 2021 by the eight iwi of Te Taihū to advance health and wellbeing, alleviate poverty, ensure adequate food and housing is available and promote education and skills within the communities of Te Taihū and in particular our Māori communities.



AHUMAHĪ / 2025 GOALS

Internships in the NTWT group	<i>In progress</i>
Work placements in Tama invested industries	<i>Start 2023</i>
Tama-invested housing options for whānau	<i>In progress</i>

Ahumahi develops opportunities for whānau to live and work in Te Taihū. Over the past year TAHC and our investment managers Koau have investigated opportunities for Tama-invested housing options for whānau in Te Taihū. Trustees have looked at growing our capacity in our operations team to bring whānau into the tari through internships, associate roles and contract roles.

Hāpai whānau is also exploring opportunities for an investment in Ngāti Tama's rohe. In addition, TAHC purchased the NTWT office building in September 2021 for our operations.

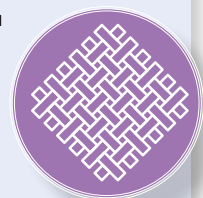


AHUWHĀITI / 2025 GOALS

Fit-for-purpose systems and operations	<i>In progress</i>
Member registration database system	<i>In progress</i>
Priority work monitoring and reporting	<i>In progress</i>

Our fifth priority area Ahuwhāiti, focuses on fit-for-purpose systems and operations. In 2020 the Trust commissioned a review of our whakapapa and registration processes, including a review of the tūpuna list, this is part of the Trust's role in managing our whakapapa database and iwi registrations, and ensuring on-going compliance with our statutory framework and Trust Deed. The review was carried out by researchers, with expertise in the area of Te Taihū history and the whakapapa of Ngāti Tama whānau and hapū in particular. As a result of the review, the Trust has determined that no changes will be made to the current tūpuna list.

The Trustees also approved a review of our data management systems and technologies, and have brought on Perita to facilitate this process.



EDUCATION GRANTS

NGĀTI TAMA KI TE TAUHU CHARITABLE TRUST DISTRIBUTED
A TOTAL OF 120 EDUCATION GRANTS TO WHĀNAU

PRE-SCHOOL

Johan Studd
Britton Ryan
Rakai Whakaruru
Marius
Teissonnieres-Smeaton
Atawhai Ford
Zayn Collins
Aria Collins
Mana Lynch
Otis Mason
Te Rongotoa Keepa
Frederik Lewith
Tamihana Katene

PRIMARY

Javier Studd
Terrance Parai
Mila-Neve Parai
Ruby-Lou Battersby
Steven Loftus
Mila Tait
Lachlan Ryan
Fletcher Ryan
Ezaiah Solomon
Nassah Solomon
Avarne Whakaruru
Wairere Tepania
Warren Te Haara
Chantelle Te Haara
Jesse-George
Teissonnieres-Smeaton
Kaiah Mason-Eru
Tuakura Ford

Onetea Ford
Scarlett Mitchell
Shardae Rongonui
Levi Collins
Kade Miller
Eden Miller
Nixon King
India King
Kahu Lynch
Harriet Mason
Amohia Keepa
Mai-Aorere Keepa
Sebastian Lewith

INTERMEDIATE

Jude Stafford
Israel Millan
Zaiezlen Whakaruru
Keelia Mason-Eru
Te koomuri Aroha
Warena Rongonui
Ekin Ashford

SECONDARY

Mylee Stafford
Sophia White
Camryn McManus
Indi Leefe
Kordiano Sullivan
Marley Coker
Teina Kingi
Te Kanawa Kingi
Bryn Morgan
Kiamaiia Snow

Israel Parai-Karepa
Tarah Miller
Otaki Miller
Maiana Mason
Kane O'Hara
Reagan O'Hara
Kees Stafford
Milan Stafford
Taarewa-i-te-rangi
Sierra Katene-Burge
Ian Brons-Ware
Ella-Jess Brons-Ware
Arohaina Hawaikirangi
Jahleah Kururangi
Wiremu Rongonui Jr
Olivia Smith
Hutana-Parana
Grant-Taylor
Cashious (Theo) Laauli
Huria Ritai
Te Whareporera
Hare-Herbert
Turehu Hare-Herbert
Kainoa Herbert
Stacey Sinclair
Sophia White
Teina Kingi
Te Kanawa Kingi
Tamati Katene
Matariki Katene

APPRENTICESHIPS

Zayed Studd
Ridge Studd

Isaac Spicer
Taylor Simpson
Benjamin Schwass
Kotuku Tapuke
Te Rangimarie Tapuke

TERTIARY

Kyler-Renee Parai
Caylin Morgan
Mereana Anderson
Kaela Schwass
Cody Ford
Hana Mason-Williams
Reuben Katene
Johannah Katene-Burge
Cydney O'Hara
Celine Nicholls
Trenyce Ashford
Shakaia Ashford
Deborah Naysmith
Cordelle Rei
Caren Huxford
Jasmine Day
Asher Katene
Mollie Tuohy
Joshua Solomon
Jason Spicer
Shemaiah Parai
Bobbi Ward-Holmes
Jury Teniteni-Smeaton
Jim Pearson
Ari Sparks
Melissa Cooper

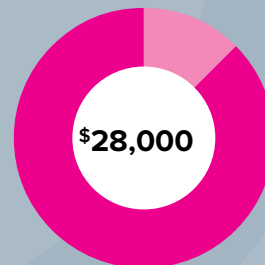
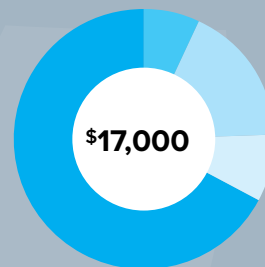
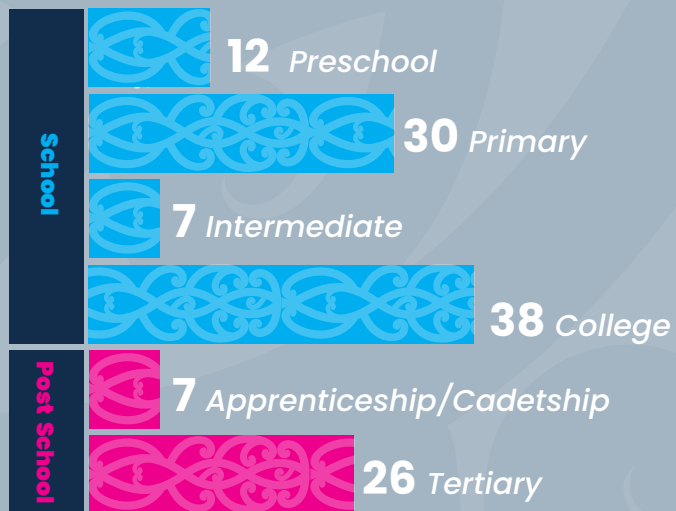


**TOTAL NUMBER OF
EDUCATION GRANTS**



TOTAL \$ OF GRANTS

GRANTS BY TYPE



*Tiakina rā ngā kano mai i Rangiatea
Whakatau iho mai Whakatū
Whakatau iho ngā mahi
a te kamupene a Ngāti Tama
mo ngā tau e whai ana
Kia rite tatou ki te mahi...
Kōkiri!*

*A Seed from Rangiatea,
sown in Nelson
Settling in the work of the Ngāti Tama
Asset Holding Company,
for the generations to follow
Let us prepare to paddle forward...
Forward!*



WAARI WARD-HOLMES
CHAIR



TAMA
ASSET HOLDING COMPANY

COMMERCIAL INVESTMENTS REPORT

TAMA ASSET HOLDING COMPANY LTD

Directors are pleased to present their report on Tama Asset Holding Company Ltd (TAHC) activities for FY21, a year that has of course occurred against the disruption and ongoing effects of COVID-19 to Aotearoa and global markets. Fortunately, there has been a sustained rebound in all major asset classes from the large downwards correction seen in March 2020 (FY20).

TAHC Comprehensive Income for the year excluding Settlements was \$8.532m lifting our Total Assets at Market Value to \$74.8m including value of carbon credits held in NTWT.

In order to grow an investment portfolio that Ngāti Tama is proud of and provides sustainable distributions to the Trust, TAHC's focus over FY21 has been on:

1. Participation in property opportunities via Hāpai whānau and or collectives of aligned iwi parties.
2. Building relationships and collectives to access scale to direct investments where iwi bring additional rights or opportunities that help maximise returns.
3. Ongoing optimisation of Forest Ground Leases, Seafood Quota and Aquaculture.

Through FY21, as in prior years, managed funds via Mercers

played a large part in our portfolio although a lesser extent in FY21 as we committed capital to direct investment opportunities. Managed funds performed exceptionally well in FY21 with a +14% return, largely as a result of a sustained recovery in all markets. Managed funds will continue to play the role of prudently investing surplus monies in a diversified way while we patiently implement our direct investment strategies in a robust and disciplined manner. To diversify our managed funds investment, we have reallocated strategic portions to higher growth orientated equities and conservative funds. This allows us to maintain higher levels of cash and liquidity in funds at lower risk levels compared to prior financial years in order to be investment ready for any direct investments that may opportunistically arise.

TAHC continued to progress and function as a leader via Hāpai whānau which acts as TAHC's main direct property investment vehicle. Hāpai invests across New Zealand in three key areas, being commercial property, build-to-rent housing and development property. TAHC has committed \$14.5m across three iwi collective property vehicles and is a foundation investor in the Hāpai whānau alongside five other iwi from throughout Aotearoa, which now

has more than eighteen limited iwi partners involved. Hāpai Commercial now owns five properties worth over \$180m and has an additional property under development due for completion in FY22. Hāpai housing currently has two build to rent projects under development in Auckland and expects to have these material investment projects completed during FY23. Hāpai whānau is also exploring opportunities for an investment in Ngāti Tama's rohe or across Te Taihū. In addition, TAHC purchased the NTWT office building in September 2021 which is leased back to NTWT on a long term lease with the building being blessed and name changed to Ngāti Tama House in December 2021.

Our successful investment in Hapāi whānau provided the formula for future investment where a collective approach with aligned iwi/Māori investors makes sense. This resulted in a newly formed Limited Partnership of eleven investors called Pūainuku Pastures (LP). This LP has acquired a 13% stake in Dairy Holdings Limited (DHL), New Zealand's largest privately owned dairy farmer. DHL has the scale to successfully run best practice environmental management across its extremely high-quality land. Assessing their environmental compliance was a big part of the due diligence process. The recent, high returns projected for dairy indicate the timing of this investment could not have been better.

In addition, Pūainuku has an overarching strategy to build a diversified portfolio of best-in-class agri/horticulture-oriented businesses.

Prior to FY21 year end, the next two limbs were formed: to execute investments in vineyard land and in high value seafood quota where we expect to see very good returns in FY22 and beyond.

Aquaculture will remain a key direct investment focus for TAHC given its advantages, predominantly via settlement, in Te Taihū. We finalised the acquisition of over twenty mussel lines in Golden Bay Marine Farmers Consortium Ltd via the pre-emptive process which now makes us the 2nd largest shareholder in that company. These acquisitions are in line with our aquaculture strategy as we are looking to grow our long-term ownership of high-quality water space via low risk lease arrangements, providing strong risk adjusted returns. We remain a 1/8 owner in Maara Moana Ltd, which has consented water space for 337 lines in Golden Bay with seven of the eight blocks now leased and operating as per our expectations.

Forestry land leasing continues to form the cornerstone of our land portfolio and has proven extremely resilient. Forestry land leasing provides reliable and stable income each year to help fund distributions to NTWT. We now own 13,300ha of forestry land with low-risk lease arrangements in place and we are exploring long term forest tree ownership in the medium term.

Ngāti Tama forestry block in Marahau.



FINANCIAL PERFORMANCE *TAHC LTD FOR THE YEAR ENDED 30 SEPT 2021*

	FY21	FY20
REVENUE		
Managed Funds*	\$2,601,005	\$706,562
Direct Investments	\$1,667,933	\$1,420,242
TOTAL REVENUE	\$4,268,938	\$2,126,804
Operating Expenses	\$477,047	\$468,587
OPERATING PROFIT	\$3,791,891	\$1,658,217
Revaluation of Investment Property and Agricultural Assets**	\$3,033,500	\$1,257,777
Revaluation of Investments in LP's	\$1,707,545	\$0
NET SURPLUS (BEFORE TAX)	\$8,532,936	\$2,915,994
Other Comprehensive Income	\$0	-\$18,636
TOTAL COMPREHENSIVE INCOME (BEFORE TAX)	\$8,532,936	\$2,897,358

NOTES * Managed Funds are Net of Management Fees ** Excludes revaluation for Fisheries Quota

HĀPAI WHĀNAU INVESTMENT VEHICLES



TAMA INVESTED ENTITIES



NOTE: Pie chart is based on market value of Ngāti Tama Group Assets at \$74.8m.

TAHC FINANCIAL PERFORMANCE AND POSITION

The financial analysis to the left incorporates the commercial performance by TAHC over the financial year.

We note the following points in particular in relation to the audited financial performance for FY21:

- Managed funds income is \$1.9m ahead of FY20 due to sustained recovery in markets.
- Direct Investments have grown materially in FY21, with continued growth expected in FY22 as we continue to implement our direct investment strategy via Hāpai, Pūainuku and aquaculture.
- Operating expenses are in line with expectations and as we scale up our investments we continue to improve our operational efficiency.
- Operating profit of \$3.791m is 128% higher than last year mostly due to the managed fund performance, although strong growth in direct assets such as school property leases, forestry and Hāpai Commercial property valuation appreciation also contributed.

A breakdown of the Market Value of the \$74.8m Total Assets being managed by TAHC (including aquaculture and quote shares updated to market valuation) is shown at left.

The key portfolio compositional changes to TAHC's portfolio during FY21 were:

- Reduction in Managed Funds used to fund aquaculture Hāpai and Pūainuku whānau investments, noting the reducing reliance on managed funds in the portfolio and the reallocation to two separate funds with Mercers.

TAHC's overall result for the year was very strong when viewed in the wider context of markets and on a risk adjusted basis.

Total Return on Assets (ROA including Quota shares valued at market value) for FY21 was 13%.

In addition, the value of Carbon Credits currently held in TAHC increased by \$1.8m to \$4.6m, bringing the total Group assets to \$74.8m.

TAHC PLANS FOR 2022 FINANCIAL YEAR

FY22 will be a year for TAHC to continue to implement our direct investment strategy while continuing to monitor and ensure existing investments are performing to a high level. We continue to review investment opportunities and are always seeking wider feedback from NTWT on cultural / whānau outcomes from our investments. The key focus areas are:

1. Continue to actively engage with collective iwi investment vehicles that provide access / opportunities for premium risk adjusted returns via Hāpai and Pūainuku whānau.
2. Actively engage in aquaculture, fishery, forestry and property direct investments maintaining effective management structures and strong operational and environment performance.
3. Monitor and manage TAHC's strategic capital allocation of managed funds portfolio including redemptions to ensure sufficient cash is available for new direct investments or via introducing a debt facility.
4. Ongoing support of NTWT including executing on its vision, values and goals. This includes encouraging Hāpai and Pūainuku vehicles to deliver wider impacts in a manner that supports financial objectives – preferential access, supply chain, cultural interpretation and cadet schemes.

Overall, given TAHC's portfolio and the development and implementation of direct investments over FY22, we expect our profits to grow in line with our expectations.

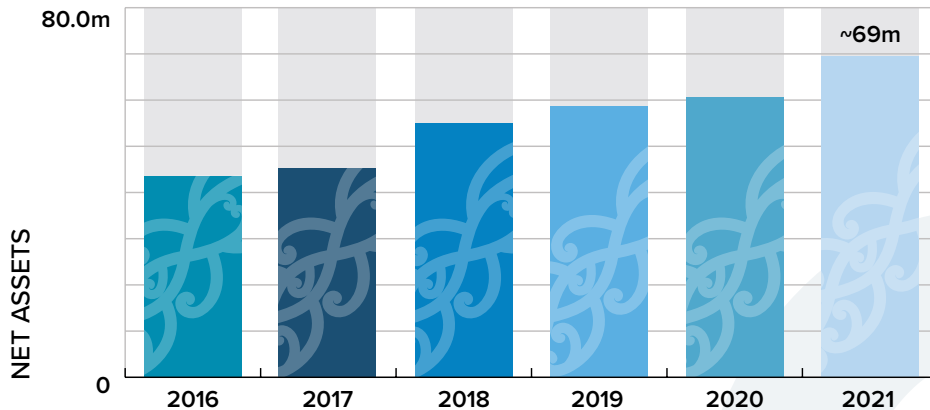
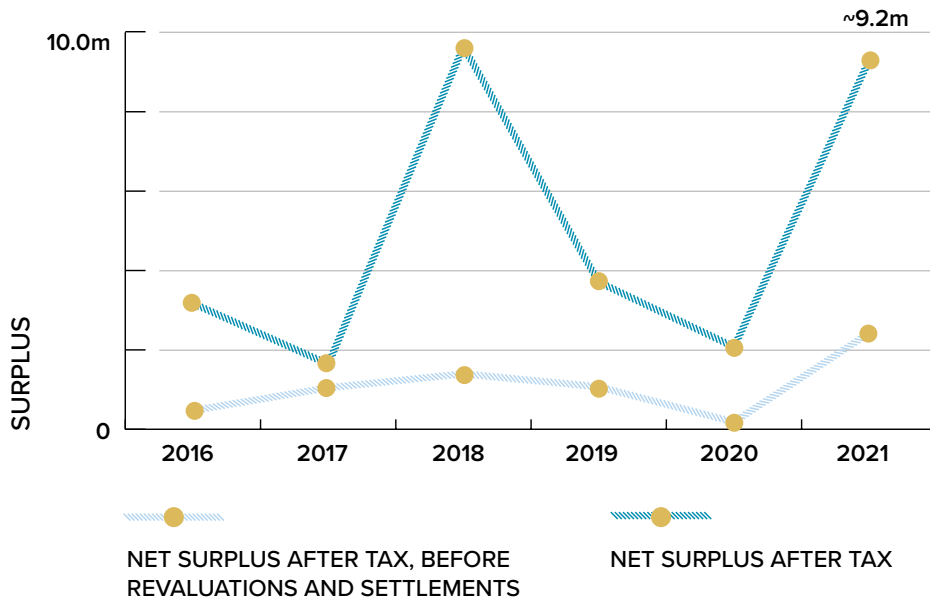
Our thanks go to NTWT office staff for their assistance and support during the year and a special acknowledgement specifically to Jaqui Ngawaka as General Manager and Paul Marlow as Accountant who have again provided the Board with immeasurable value and effort.

We also thank our Investment Managers, Koau Capital for their significant contribution in finding and developing and managing the investment opportunities that we now participate in.

***Nā reira, tēnā koutou, tēnā koutou katoa
Waari Ward-Holmes, Butch Little, Toni Grant, Tony Sewell***

FINANCIAL OVERVIEW

NGĀTI TAMA GROUP: NET WORTH AND ANNUAL SURPLUS



NOTE: Details are summarised from Audited Financial Statements, a copy of the full Audited Financial Statements for the year ended 30 September 2021 is available on request.

HĀPAI



George Street



Awatoto Business Park



Devonport Road



Macleans College



Mangere Bader Drive



McLeod Street



Stark Drive



Tamaki, Line Road

NGĀTI TAMA GROUP FINANCIAL PERFORMANCE

Financial Performance	2015/16 (\$000s)	2016/17 (\$000s)	2017/18 (\$000s)	2018/19 (\$000s)	2019/20 (\$000s)	2020/21 (\$000s)	
Operating Revenue	2,123	2,710	3,628	3,279	2,709	5,178	Includes revenue from Forest leases, Ministry of Education leases, gain on managed funds, ACE leases, share of investments
Revaluations	1,207	596	5,061	2,638	1,893	6,872	Revaluation of investment properties, forests and carbon credits.
Settlements	1,492	-	3,175	-	-	-	
Other Revenue	-	-	-	-	-	-	
Total Revenue	4,822	3,306	11,864	5,917	4,602	12,050	Includes salaries, Trustee meeting fees, honoraria & expenses. Also office rent, managed fund fees, legal fees and professional fees.
Expenses	1,583	1,600	2,051	1,896	1,878	2,060	
Grants and Distributions	37	33	63	93	180	152	
Taxation	30	32	118	219	469	541	Current year tax and provision for deferred tax in prior years.
Net Surplus	3,172	1,641	9,632	3,709	2,075	9,297	

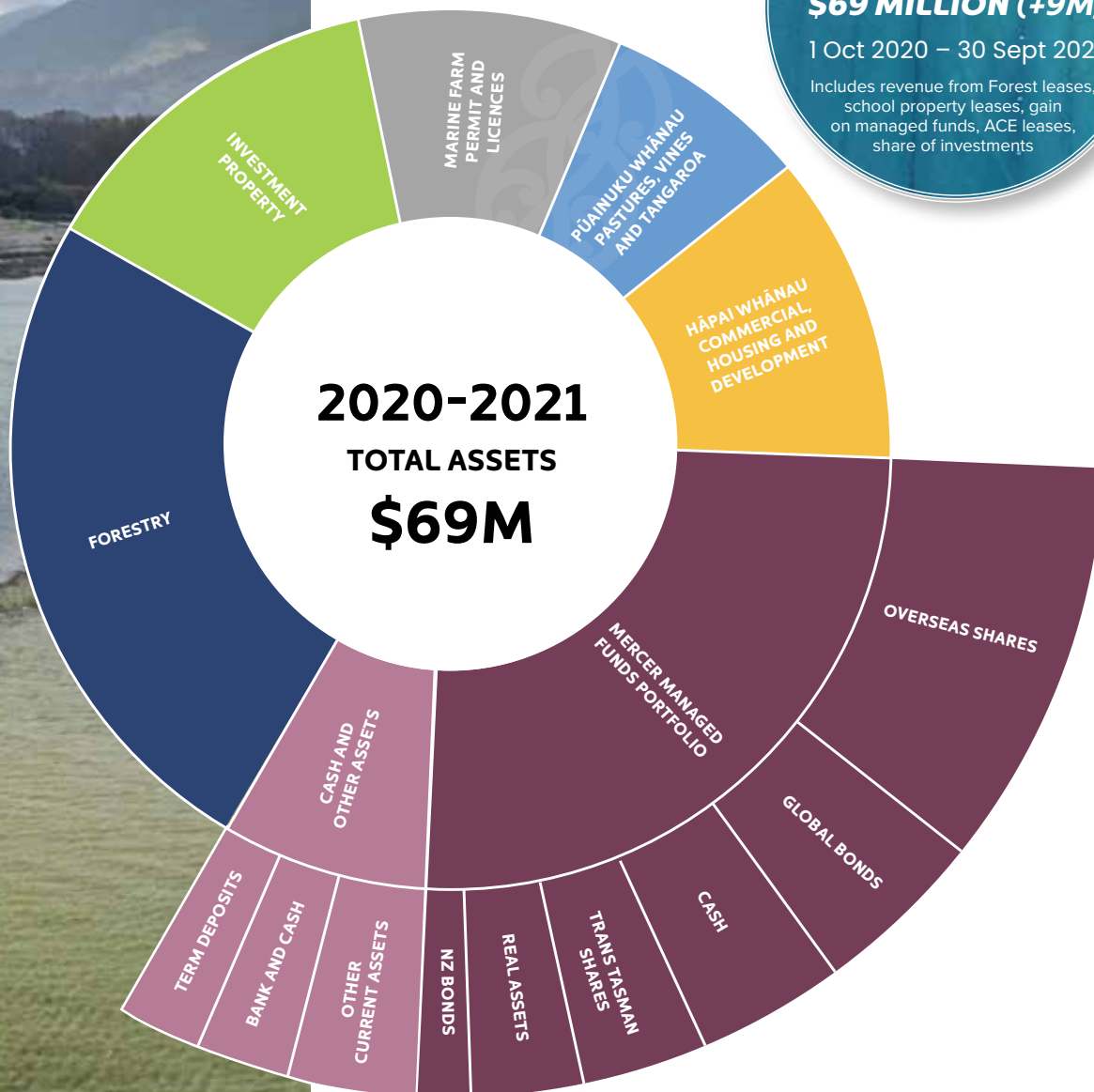
NGĀTI TAMA GROUP FINANCIAL POSITION

Financial Position	2015/16 (\$000s)	2016/17 (\$000s)	2017/18 (\$000s)	2018/19 (\$000s)	2019/20 (\$000s)	2020/21 (\$000s)	
Bank and Cash	1,136	1,346	468	3,358	3,238	1,657	
Term Deposits	3,494	613	518	500	2,513	1,500	
Other Current Assets	292	229	201	237	404	510	Value of Tree crop
Managed Funds	20,891	26,285	33,136	29,606	23,887	17,990	
Other Investments	385	426	435	436	4,472	15,436	
Investment Property	12,333	10,939	15,537	18,768	19,759	24,395	Cultural Assets include: • Wainui Rd Urupa (100%) • Takaka Riv Mouth (100%) • Parapara Peninsula and Parapara Valley (100%) • Puponga Farm Triangle Flat (1/3) • Puponga Cape House (1/3) • Puponga Point Pā (1/3) • Matangi Awhio (1/7th)
Agricultural Assets	154	201	225	839	972	1,386	
Cultural Assets	749	759	759	1,129	1,129	1,102	
Quota and other intangible assets	4,378	4,606	3,884	4,015	4,646	6,512	
Property, Plant and Equipment	91	103	63	80	154	465	
Total Assets	43,903	45,507	55,226	58,968	61,174	70,953	Fishing Quota, Carbon Credits and Marine Farm licences.
Current Liabilities	278	241	328	361	215	659	
Non-current Liabilities	-	-	-	-	280	318	Deferred tax and non current portion of lease liability
Net Assets	43,625	45,266	54,898	58,607	60,679	69,976	
After tax Return on Net Assets (excludes settlements)	4%	4%	11%	6%	3%	13%	

NOTES: The financial position above is the Ngāti Tama Group audited financial position. Note, the market value of Ngāti Tama Group Assets is \$74.8m.

FINANCIAL BREAKDOWN





**NET SURPLUS:
\$9 MILLION (+7M)**

**NET ASSETS:
\$69 MILLION (+9M)**

1 Oct 2020 – 30 Sept 2021

Includes revenue from Forest leases, school property leases, gain on managed funds, ACE leases, share of investments

Note: Pie chart is based off of the Ngāti Tama Group audited financial position.

TE HAUMITANGA WHAKAMUA



**Registered
Members**

AS AT 30 SEPT 2021

658



Education



60

Back to School packs



1

Ngāti Tama
Te Waikoropū Resources

NGĀTI TAMA STATISTICS:

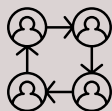
1 Oct 2020 – 30 Sept 2021

Over \$140,000 of external
funding secured to progress
whānau engagement*

**Alongside Tama Investment*



**Te Reo
me ōna Tikanga**



3

Te Rautaki Reo Wānanga



24

Te Tauihu Online Karakia



15

Oral History Interviews



Grants



120

Education



14

Manaaki



2

Sport and Cultural



3

Tangi



3

Kaupapa

(incl. Taiao, MKM and Te Awhina Marae)

INVESTING IN OUR FUTURE



Ngāti Tama Covid Response

CURRENT DATA



50

\$200 Kai Pack Orders



148

Ngāti Tama \$200 Grant



162

Vaccine Competition entries

88



Energy Grants



Whānau Communications

USERS



501

Ngāti Tama App



710 ⁺¹⁵⁷
(2020)

Facebook



40

Te Hōpua E-pānui



2

DISTRIBUTIONS

Te Puna Magazine



Hui-ā-Tau

ATTENDEES



+34
(2019/20)

50

AGM attendance in person



10

Hui-ā-Tau
attendance via app





**KO TE TE PAE TAWHITI, WHĀIA KIA TATA –
SET YOUR GOALS HIGH**

Kākā Point, Kaikōrero

An aerial photograph of a coastal village nestled between lush green hills and a turquoise sea. A golf course is visible in the center, surrounded by dense forest. Several houses with blue roofs are scattered across the landscape. The water is a vibrant green, and the sky is hazy. The text is overlaid in the lower-left quadrant.

**KO TE PAE TATA, WHAKAMAUA KIA TINA –
AND CHERISH THOSE THAT YOU ACHIEVE**



CONTACT US

NGĀTI TAMA KI TE WAIPOUNAMU TRUST
74 Waimea Road, Nelson 7010

MAILING ADDRESS
PO Box 914, Nelson 7040

TARI
03 458 1740 | 0800 8262 494 (TAMA IWI)
whanau@ngati-tama.iwi.nz

NGĀTI TAMA ONLINE
ngatitama.nz | whanau@ngati-tama.iwi.nz

